

Maps and Data  
University of  
Tsukuba

At a Glance



筑波大学

University of Tsukuba

# 1 HISTORY, CREST & SLOGAN

## History

The University of Tsukuba was established in October 1973, due to the relocation of its antecedent, the Tokyo University of Education, to the Tsukuba area. As the new concept comprehensive university in Japan to be established under a country-wide university reform plan, the University has featured “Openness” with “New Systems for Education and Research” under a “New University Administration.” The university reform plays a major role in our continuing effort for improvement. We are striving to create a unique, active, and internationally competitive university with superlative education and research facilities.

## Crest



The University of Tsukuba’s “five-and-three paulownia” crest derives from the emblem adopted by Tokyo Higher Normal School students in 1903 for their school badge, which was inherited by the Tokyo University of Education in 1949. Later, in 1974, the University Council officially approved the crest as the school insignia of the University of Tsukuba.

The “five-and-three paulownia” design is based on a traditional Japanese motif, but brings a unique variation to the classic style: the University of Tsukuba crest is different because only the outline of the flowers is depicted.

The color of the crest is CLASSIC PURPLE, the official color of the University of Tsukuba.

## Slogan

**IMAGINE THE FUTURE.**

(Japanese)

開かれた未来へ。

Since its inception, the University of Tsukuba’s philosophy has been one of openness as we seek to forge a better future through education, research, and all other aspects of academia. That philosophy is summed up in our slogan, “IMAGINE THE FUTURE.”

# 2 ACADEMIC ORGANIZATION

## 10 Schools, 23 Colleges, 1 Specific Degree Program, School of Comprehensive Studies

### Schools

Colleges

#### Humanities and Culture

Humanities, Comparative Culture, Japanese Language and Culture

#### Social and International Studies

Social Sciences, International Studies

#### Human Sciences

Education, Psychology, Disability Sciences

#### Life and Environmental Sciences

Biological Sciences, Agro-Biological Resource Sciences, Geoscience

#### Science and Engineering

Mathematics, Physics, Chemistry, Engineering Sciences, Engineering Systems, Policy and Planning Sciences, Bachelor's Program in Interdisciplinary Engineering

#### Informatics

Information Science, Media Arts, Science and Technology, Knowledge and Library Sciences

#### Medicine and Health Sciences

Medicine, Nursing, Medical Sciences

#### Physical Education, Health and Sport Sciences

#### Art and Design

#### Transdisciplinary Science and Design (Opening in September 2024)

#### Comprehensive Studies\*

\*After their first year in the School of Comprehensive Studies, students will belong to another college/school group. Please note that students cannot belong to the School of Physical Education, Health and Sport Sciences and Transdisciplinary Science and Design.

## 3 Graduate Schools, 6 Degree Programs +6 Programs, 56 Specific Degree Programs

### Graduate School of Business Sciences, Humanities and Social Sciences

Degree Programs in Humanities and Social Sciences (3 Specific Degree Programs)

Humanities, International Public Policy, International and Advanced Japanese Studies

Degree Programs in Business Sciences (2 Specific Degree Programs)

Law, Business Administration

Law School Program

MBA Program in International Business

### Graduate School of Science and Technology

Degree Programs in Pure and Applied Sciences (5 Specific Degree Programs)

Mathematics, Physics, Chemistry, Engineering Sciences, Materials Innovation

Degree Programs in Systems and Information Engineering (8 Specific Degree Programs)

Policy and Planning Sciences, Service Engineering, Risk and Resilience Engineering, Computer Science, Intelligent and Mechanical Interaction Systems, Engineering Mechanics and Energy, Empowerment Informatics, Life Science Innovation (Bioinformatics)

Degree Programs in Life and Earth Sciences (12 Specific Degree Programs)

Biology, Agro-Bioresources Science and Technology, Agricultural Sciences, Life and Agricultural Sciences, Bioindustrial Sciences, Geosciences, Environmental Sciences, Environmental Studies, Mountain Studies, Life Science Innovation (Food Innovation), Life Science Innovation (Environmental Management), Life Science Innovation (Biomolecular Engineering)

Joint Master's Degree Program in Sustainability and Environmental Sciences

### Graduate School of Comprehensive Human Sciences

Degree Programs in Comprehensive Human Sciences (26 Specific Degree Programs)

Education, Psychology, Disability Sciences, Counseling, Counseling Science, Rehabilitation Science, Neuroscience, Medical Sciences (Doctoral program), Nursing Science, Medical Sciences (Master's program), Public Health (Master's program), Human Care Science, Public Health (Doctoral program), Sports Medicine; Physical Education, Health and Sport Sciences (Master's program); Sport and Olympic Studies; Physical Education, Health and Sport Sciences (Doctoral program); Coaching Science, Sport and Wellness Promotion, Art, Design, Heritage Studies, Informatics, Human Biology, Life Science Innovation (Disease Mechanism), Life Science Innovation (Drug Discovery)

Joint Master's Program in International Development and Peace through Sport

Joint Doctoral Program in Advanced Physical Education and Sports for Higher Education

International Joint Degree Master's Program in Agro-Biomedical Science in Food and Health

## School of Integrative and Global Majors (SIGMA)

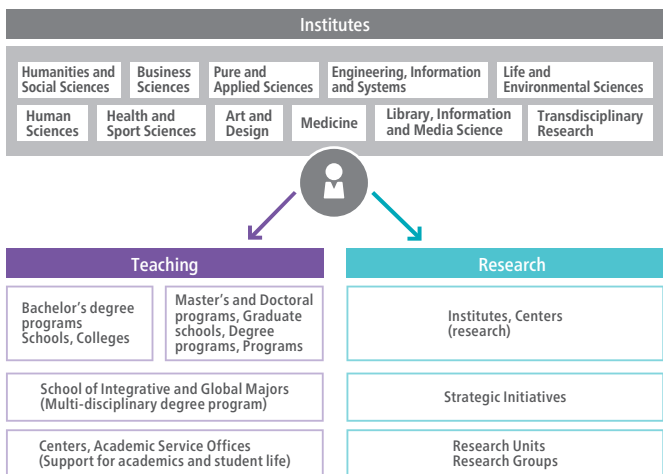
Ph.D. Program in Humanics

Bachelor's Program in Global Issues

# 3 FACULTY & STAFF

## Tsukuba's Unique System of Faculty Organizations

Faculty members at the University of Tsukuba belong to "institutes"; each pursues basic research and teaches at his or her assigned schools, colleges, graduate schools, degree programs, programs, and centers, but the basic affiliation remains with a single faculty. By making the organizational units that faculty members belong to (i.e., the institutes) independent of where they teach and research, we have made it possible for faculty members to participate in different departments and schools, thus promoting a more pan-disciplinary, cross-sectional structure conducive to the easier creation of new programs.



## Faculty & Staff Numbers

As of May 1, 2024

		Total	Females	Non-Japanese	Non-Japanese Females
Directors		11	3	0	0
Teaching Faculty	Professors	541	70	14	4
	Associate Professors	523	101	48	17
	Lecturers	196	41	1	0
	Assistant Professors	496	139	82	32
	Teachers at Laboratory Schools	547	260	3	2
	Subtotal	2,314	614	148	55
Staff	Administrative Staff	1,175	756	22	17
	Technical/Medical Staff	1,945	1,385	14	10
	Subtotal	3,120	2,141	36	27
<b>Total</b>		<b>5,434</b>	<b>2,755</b>	<b>184</b>	<b>82</b>

# 4 STUDENT BODY (SCHOOLS & COLLEGES)

As of May 1, 2024

	Total	Males	Females
<b>School of Humanities and Culture</b>			
College of Humanities	487	279	208
College of Comparative Culture	336	120	216
College of Japanese Language and Culture	121	40	81
<b>School of Social and International Studies</b>			
College of Social Sciences	340	199	141
College of International Studies	356	165	191
<b>School of Human Sciences</b>			
College of Education	149	79	70
College of Psychology	220	79	141
College of Disability Sciences	152	38	114
<b>School of Life and Environmental Sciences</b>			
College of Biological Sciences	312	169	143
College of Agro-Biological Resource Sciences	500	254	246
College of Geoscience	208	147	61
<b>School of Science and Engineering</b>			
College of Mathematics	162	143	19
College of Physics	262	220	42
College of Chemistry	203	142	61
College of Engineering Sciences	484	412	72
College of Engineering Systems	532	477	55
College of Policy and Planning Sciences	491	390	101
Bachelor's Program in Interdisciplinary Engineering	34	26	8
<b>School of Informatics</b>			
College of Information Science	368	334	34
College of Media Arts, Science and Technology	241	200	41
College of Knowledge and Library Sciences	443	259	184
<b>School of Medicine and Health Sciences</b>			
College of Medicine	824	533	291
College of Nursing	313	15	298
College of Medical Sciences	152	43	109
School of Physical Education, Health and Sport Sciences	1,039	735	304
<b>School of Art and Design</b>	447	93	354
<b>School of Integrative and Global Majors</b>	23	8	15
<b>School of Comprehensive Studies</b>	435	317	118
<b>Total</b>	<b>9,634</b>	<b>5,916</b>	<b>3,718</b>

# 4 STUDENT BODY (GRADUATE SCHOOLS)

## Reorganized Graduate Schools (AY 2020 Established)

As of May 1, 2024 \*AY= Academic Year (Apr. 1 - Mar. 31)

Total Males Females

### Graduate School of Business Sciences, Humanities and Social Sciences

Degree Programs in Humanities and Social Sciences	475	217	258
Degree Programs in Business Sciences	242	182	60
Law School Program	121	80	41
MBA Program in International Business	75	50	25

### Graduate School of Science and Technology

Degree Programs in Pure and Applied Sciences	843	692	151
Degree Programs in Systems and Information Engineering	1,477	1,237	240
Degree Programs in Life and Earth Sciences	1,050	614	436
Joint Master's Degree Program in Sustainability and Environmental Sciences	16	9	7

### Graduate School of Comprehensive Human Sciences

Degree Programs in Comprehensive Human Sciences	2,278	1,157	1,121
Joint Master's Program in International Development and Peace through Sport	15	7	8
Joint Doctoral Program in Advanced Physical Education and Sports for Higher Education	15	7	8
International Joint Degree Master's Program in Agro-Biomedical Science in Food and Health	29	9	20

### School of Integrative and Global Majors

59 39 20

**Subtotal** 6,695 4,300 2,395

## Traditional Graduate Schools (AY 2020 Student Recruitment Suspended)

As of May 1, 2024

Total Males Females

Graduate School of Humanities and Social Sciences	65	35	30
Graduate School of Business Sciences	86	66	20
Graduate School of Pure and Applied Sciences	11	9	2
Graduate School of Systems and Information Engineering	32	23	9
Graduate School of Life and Environmental Sciences	18	13	5
Graduate School of Comprehensive Human Sciences	155	83	72
Graduate School of Library, Information and Media Studies	23	14	9
Graduate School of Integrative and Global Majors	3	2	1

**Subtotal** 393 245 148

**Total** 7,088 4,545 2,543

# 5 INTERNATIONAL STUDENTS

## Number of International Students

As of May 1, 2024

### ① By Area

Region	No. of International Students	No. of Countries
Asia	1,916	20
North America	40	2
South and Central America	89	15
Europe	117	25
CIS	89	8
Oceania	14	6
Middle and Near East	39	13
Africa	107	27
<b>Total</b>	<b>2,411</b>	<b>116</b>

### ② By Country/Region

Top 10	Country/Region	No. of International Students
1	China	1,282
2	Indonesia	124
3	Republic of Korea	105
4	Taiwan	83
5	Vietnam	70
6	France	41
7	Brazil	39
8	Bangladesh	37
9	USA	35
10	India	34

### ③ By Student Category

Student Category	No. of International Students
Undergraduate Students	253
Graduate Students	1,749
Non-degree Research Students	150
Short-term International Students	254
Credited Auditors	0
Students of Intensive Japanese Training	5
<b>Total</b>	<b>2,411</b>

# 6 CAREER PATHS

## Career Paths of Graduates in AY 2023 (Sorted by School and College)

As of May 1, 2024

School/College	Graduates	Employed	Breakdown Ratio of Employed				Advanced to Graduate Schools	Others
			Private Sector	Public Sectors, etc.	Doctor's Residency	Others		
<b>School of Humanities and Culture</b>								
College of Humanities	111 (53)	71 (37)	75%	10%	15%	22 (7)	18 (9)	
College of Comparative Culture	80 (58)	61 (46)	82%	5%	13%	12 (8)	7 (4)	
College of Japanese Language and Culture	40 (30)	31 (24)	68%	10%	22%	4 (4)	5 (2)	
<b>School of Social and International Studies</b>								
College of Social Sciences	87 (35)	61 (22)	85%	15%		13 (8)	13 (5)	
College of International Studies	59 (33)	39 (20)	92%	8%		13 (8)	7 (5)	
<b>School of Human Sciences</b>								
College of Education	40 (22)	26 (15)	88%	12%		12 (6)	2 (1)	
College of Psychology	49 (36)	33 (23)	85%	15%		12 (9)	4 (4)	
College of Disability Sciences	35 (23)	19 (15)	69%	5%	26%	13 (8)	3 (0)	
<b>School of Life and Environmental Sciences</b>								
College of Biological Sciences	83 (42)	12 (8)	75%	8%	17%	65 (32)	6 (2)	
College of Agro-Biological Resource Sciences	136 (73)	26 (15)	81%	4%	15%	103 (55)	7 (3)	
College of Geoscience	56 (18)	9 (3)	78%	11%	11%	42 (12)	5 (3)	
<b>School of Science and Engineering</b>								
College of Mathematics	37 (4)	14 (3)	86%	14%		19 (1)	4 (0)	
College of Physics	56 (9)	10 (2)	90%	10%		42 (6)	4 (1)	
College of Chemistry	49 (13)	2 (1)	50%	50%		46 (12)	1 (0)	
College of Engineering Sciences	129 (11)	11 (1)	82%	18%		116 (9)	2 (1)	
College of Engineering Systems	125 (9)	12 (1)	100%			112 (8)	1 (0)	
College of Policy and Planning Sciences	132 (34)	45 (18)	84%	16%		78 (14)	9 (2)	
Bachelor's Program in Interdisciplinary Engineering	3 (0)	1 (0)	100%			0 (0)	2 (0)	
<b>School of Informatics</b>								
College of Information Science	91 (8)	25 (4)	100%			64 (3)	2 (1)	
College of Media Arts, Science and Technology	58 (11)	16 (3)	100%			40 (8)	2 (0)	
College of Knowledge and Library Sciences	106 (46)	77 (36)	81%	1%	18%	21 (8)	8 (2)	
<b>School of Medicine and Health Sciences</b>								
College of Medicine	136 (49)	132 (48)	11%	89%		1 (0)	3 (1)	
College of Nursing	77 (76)	63 (63)	81%	3%	16%	9 (9)	5 (4)	
College of Medical Sciences	38 (25)	14 (11)	93%	7%		23 (14)	1 (0)	
<b>School of Physical Education, Health and Sport Sciences</b>								
	250 (76)	183 (54)	85%	10%	5%	48 (17)	19 (5)	
<b>School of Art and Design</b>								
	97 (75)	51 (41)	90%	6%	4%	40 (29)	6 (5)	
<b>School of Integrative and Global Majors (SIGMA)</b>								
	9 (7)	5 (3)	100%			2 (2)	2 (2)	
<b>Total</b>	<b>2,169 (876)</b>	<b>1,049 (517)</b>	<b>75%</b>	<b>4%</b>	<b>10%</b>	<b>972 (297)</b>	<b>148 (62)</b>	

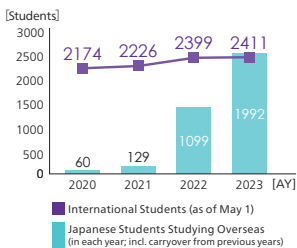
※ The figures in the parentheses indicate the number of female students.



# 7 INTERNATIONAL TIES

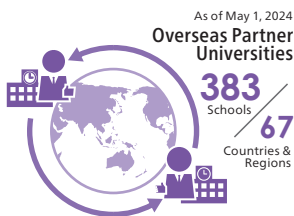
## Students from Overseas

The University of Tsukuba has attracted students from more than 100 countries and regions with many programs offered in English and hands-on Japanese language instruction tailored to each student's requirements.



## Overseas Study Opportunities

The University of Tsukuba has 383 partner institutions. Among those who studied abroad, approximately 35% were undergraduate students and 65% were graduate students. The most popular destination was the USA, followed by France and Taiwan.



## University of Tsukuba's Overseas Offices

We have 14 offices in 12 countries and regions.



## Campus-in-Campus (CiC) Partner Institutions

The Campus-in-Campus (CiC) Initiative is a scheme of sharing campuses among the partner universities with a purpose of utilizing our respective research and educational resources without any national or institutional barriers. Moreover, through the CiC scheme, partner universities are highly expected to enhance the mobility of exchange students, faculty members and administrative staff.

As of May 2024, the following universities are CiC partners:

Université de Bordeaux (France) / National Taiwan University (Taiwan) / University of São Paulo (Brazil) / Universiti Teknologi Malaysia (Malaysia) / University of California, Irvine (USA) / Utrecht University (Netherlands) / Université Grenoble Alpes (France) / The Ohio State University (USA) / Ruhr Universität Bochum (Germany) / Al-Farabi Kazakh National University (Kazakhstan) / Indian Institute of Technology Guwahati (India) / National Cheng Kung University (Taiwan) / KU Leuven (Belgium)

# 8 RESEARCH ACHIEVEMENTS

## ■ Nobel Laureates

### 1965 Nobel Prize in Physics ■ TOMONAGA Sin-Itiro

[professor emeritus, former president of Tokyo University of Education] "For quantum electro dynamics, specifically for the discovery of super-many-time theory and the renormalization theory"

### 1973 Nobel Prize in Physics ■ ESAKI Leo

[professor emeritus, former president of University of Tsukuba] "For experimental discoveries regarding tunneling phenomena in semiconductors and superconductors"

### 2000 Nobel Prize in Chemistry ■ SHIRAKAWA Hideki

[professor emeritus, University of Tsukuba] "For the discovery and development of conductive polymers"

## ■ Number of Highly-Cited Academic Papers

One measure of a university's research achievements is the number of times its researchers' papers are cited. According to "Ranking of Japanese research institutions based on the number of high-impact papers 2024 edition" published by Clarivate Analytics (Japan) Co.Ltd., the University of Tsukuba had the 11th highest number of highly-cited papers among all Japanese institutions in the eleven years from January 1, 2013 to December 31, 2023. A highly-cited paper is defined as an outstanding paper with the citation count ranked in the world's top 1%.

### Top 20 Japanese Research Institutions

Rank	Institution	No. of Highly-Cited Papers	Percentage
1	University of Tokyo	1,656	1.6%
2	Kyoto University	1,007	1.4%
3	RIKEN	694	2.3%
4	Osaka University	579	1.1%
5	Tohoku University	552	1.0%
6	National Institute for Materials Science	551	3.2%
7	Nagoya University	492	1.2%
8	Kyushu University	469	1.2%
9	Hokkaido University	401	1.0%
10	National Cancer Center Japan	389	3.7%
11	University of Tsukuba	324	1.2%
12	Tokyo Institute of Technology	310	1.1%
13	Keio University	301	1.2%
14	National Institute of Advanced Industrial Science and Technology	289	1.1%
15	Hiroshima University	263	1.1%
16	National Institutes of Natural Sciences	238	1.7%
17	Kobe University	229	1.1%
18	Waseda University	203	1.3%
19	Okayama University	193	1.1%
20	Kindai University	185	2.3%

# 9 EXTERNAL FUNDING

## Number of Grants-in-Aid for Scientific Research (KAKENHI) Received in FY 2023\*

Rank	Institution	Number of KAKENHI (incl. new and ongoing)	New grants	Rank	Institution	Number of KAKENHI (incl. new and ongoing)	New grants
1	University of Tokyo	3,948	1,367	6	Nagoya University	1,712	512
2	Kyoto University	2,933	914	7	Hokkaido University	1,687	551
3	Osaka University	2,579	854	8	University of Tsukuba	1,363	431
4	Tohoku University	2,325	732	9	Hiroshima University	1,193	363
5	Kyushu University	1,994	594	10	Kobe University	1,117	375

Source: Ministry of Education, Culture, Sports, Science and Technology, Distribution of Grants-in-Aid for Scientific Research in FY2023 (January 2024)

\*Sorted according to research institutions to which the principal investigator of each project belongs.

\*The above source lists only major categories.

## Major Categories of KAKENHI Received in FY 2023\*

Philosophy, art, and related fields / Literature, linguistics, and related fields / Geography, cultural anthropology, folklore, and related fields / Sociology and related fields / Education and related fields / Psychology and related fields / Particle-, nuclear-, astro-physics, and related fields / Astronomy and related fields / Social systems engineering, safety engineering, disaster prevention engineering, and related fields / Inorganic/coordination chemistry, analytical chemistry, and related fields / Biomolecular chemistry and related fields / Agricultural chemistry and related fields / Agricultural and environmental biology and related fields / Agricultural economics and rural sociology, agricultural engineering, and related fields / Biology at organismal to population levels and anthropology, and related fields / Neuroscience and related fields / Brain sciences and related fields / Society medicine, nursing, and related fields / Sports sciences, physical education, health sciences, and related fields / Information science, computer engineering, and related fields / Human informatics and related fields / Applied informatics and related fields / Environmental conservation measure and related fields

Source: Ministry of Education, Culture, Sports, Science and Technology, Distribution of Grants-in-Aid for Scientific Research in FY2023 (January 2024)

\*Categories of grants-in-aid of "Medium-sized Section" for which the University is ranked within top 10 on receiving number (cumulative number newly adopted last five years)

## External Funding Acceptance Record in FY 2023

Category	No. of Projects	Amount of External Funding
Projects Funded with KAKENHI (Provisional grant amount)(Principal investigator's only)	1,548	4,577,894
Commissioned Research (Including clinical trial)	791	6,754,507
Joint Research	616	2,384,677
Projects Funded by Donations (for Academic Research) and Research Grants	646	1,806,153

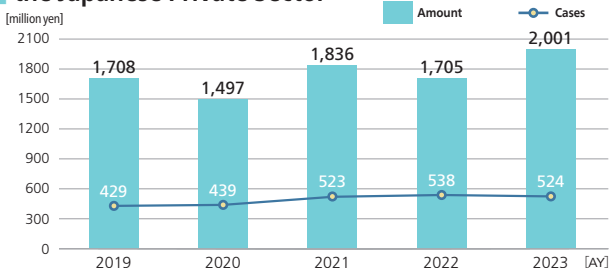
(Unit: thousand yen)

## Typical Examples of External Funding in FY 2023

Fund	Project	Representative Researcher
KAKENHI Grant-in-Aid for Specially Promoted Research	Molecular design of innovative drugs based on molecular assembly	Institute of Pure and Applied Sciences NAGASAKI Yukio, Professor
KAKENHI Fund for the Promotion of Joint International Research (International Leading Research)	Deciphering the mysteries of sleep: creating a global network of sleep neurobiologists	International Institute for Integrative Sleep Medicine (WPI-IIS) YANAGISAWA Masashi, WPI-IIS Director and Professor
AMED A Project Focused on Developing Basic Technology Aiming at Industrialization of Regenerative Medicine and Gene Therapy (Development of Advanced Drug Discovery Tools Based on Regenerative Medicine Technology)	Empirical study on drug discovery platform using domestically produced MPS based on commercialization strategy	Institute of Life and Environmental Sciences ITO Yuzuru, Professor
Cabinet office of Japan Cross-ministerial Strategic Innovation Promotion Program: SIP	Development of social technologies to improve the inclusiveness of community residents and maximize the well-being of women	Humanities and Social Sciences MATSUSHIMA Midori, Associate Professor
National Agriculture and Food Research Organization (NARO) Bio-oriented Technology Research Advancement Institution (BRAIN) Development and improvement program of strategic smart agricultural technology	Development of AI-based smart weeding systems	Institute of Systems and Information Engineering NOBUHARA Hajime, Professor

# 10 PARTNERSHIPS & UNIVERSITY START-UPS

## University of Tsukuba Joint Research Funding from the Japanese Private Sector

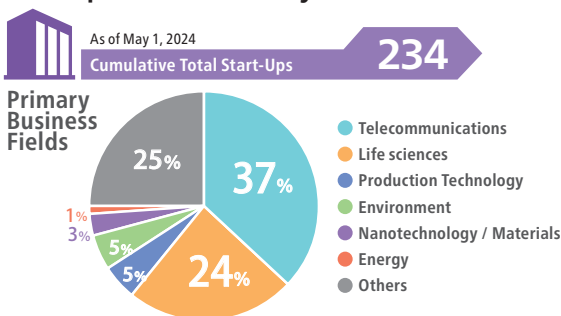


## R&D Centers

The R&D Centers are part of the University of Tsukuba's quest to pursue research and innovation that result in benefits for society. Externally funded, these centers are established as industry-university-government partnerships for joint research in areas of high demand from the community. As of April 1, 2024, the university has 12 R&D Centers, which operate under the Headquarters for International Industry-University Collaboration.

- R&D Center for Precision Medicine
- R&D Center for Sport Innovation
- R&D Center for Frontiers of MIRAI in Policy and Technology
- R&D Center for Health Services
- R&D Center for Tailor-Made QOL
- R&D Center for Working Persons' Psychological Support
- R&D Center for Innovative Material Characterization
- R&D Center for Innovative Drug Discovery
- R&D Center for Digital Nature
- R&D Center for Smart Wellness City Policies
- R&D Center for Lifestyle Innovation
- R&D Center for Zero CO<sub>2</sub> Emission with Functional Materials

## Start-ups from University of Tsukuba



## Fund-Raising by Start-ups from University of Tsukuba

The amount of fund-raising has expanded rapidly due to the success of Start-ups. It has exceeded 44 billion yen since AY 2018.

# 11 SOCIAL CONTRIBUTION & REGIONAL COOPERATION

## Tsukuba International Strategic Zone

In 2011, Tsukuba City was designated an International Strategic Zone. Under this concept, the strengths of the universities and research institutions throughout the greater Tsukuba area are pooled and leveraged to drive innovations and lead to the quick development of new businesses for the betterment of lifestyles and the environment.

International Strategic Zones benefit from deregulation of national and local government regulations and receive financial and taxation support as they strive to promote industry. At present, there are nine projects underway in the Tsukuba International Strategic Zone, and the University of Tsukuba is involved in eight of them.

- Development and implementation of boron neutron capture therapy (BNCT)
- Living with personal care robots
- Commercialization of algae biomass energy
- TIA, creating a global innovation platform
- Development of innovative pharmaceuticals and medical technologies using biomedical resources in Tsukuba
- Domestic production of medical radioisotope (technetium-99m) in Japan
- Achieving practical use of revolutionary robot medical equipment and the formation of a global focal point
- Practical development of a recycling system for strategic urban mining
- Development and commercialization of a plant-based useful material production system that promotes human health

## High School-University Cooperation

Given its strengths as a provider of a comprehensive range of education and taking advantage of its location in Tsukuba Science City, the University of Tsukuba promotes partnerships with high schools. The university faculty on the front lines of research conduct lessons at high schools and provide mock university lectures so that the students can experience university classes, thus contributing to human resource development for high school students.

## Social Contribution Projects

We are developing the unique initiatives of the University of Tsukuba with a wide range of academic area, such as "Science Promotion (3)", "Globalization (2)", "Culture and regional revitalization (11)", "Environment (4)", "Health, medical care, and welfare (5)", etc.

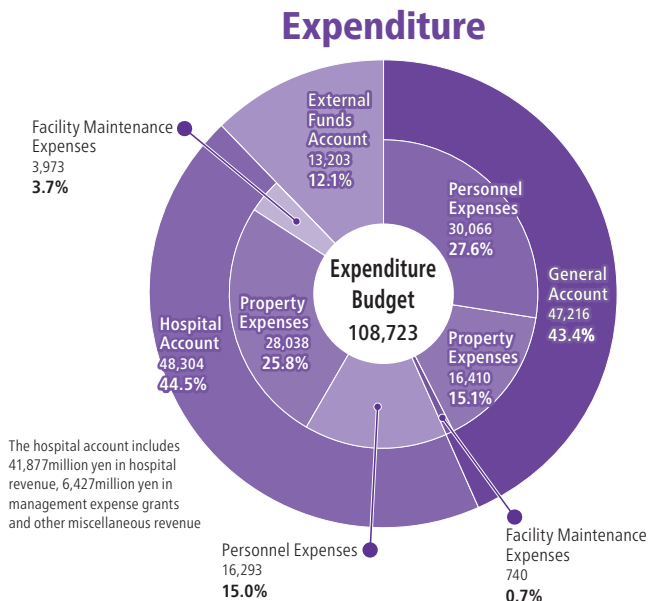
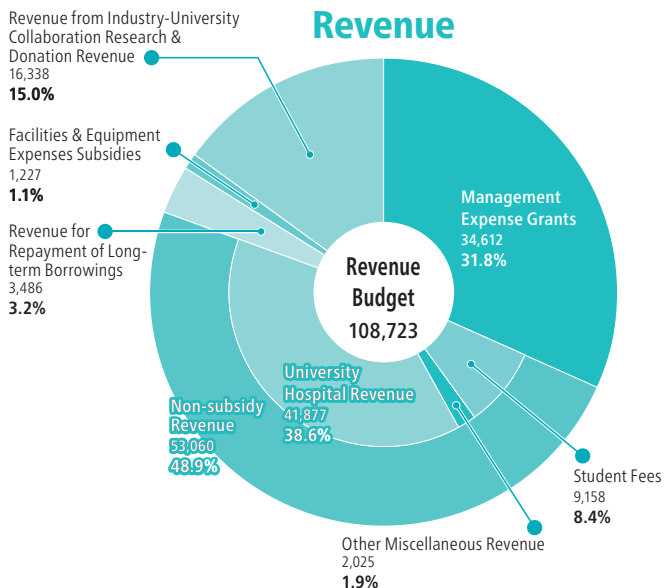
### Examples of Social Contribution Projects for AY 2024

Field	Project
Culture and regional revitalization	Tsukuba Educational Support Project for Children with Multilingual and Multicultural Backgrounds
Environment	Save the rare species that live in the local area (Minamimaki Village, Nagano Prefecture)
Health, medical care, and welfare	A pamphlet for people with developmental disorders, "The First Guide to Medication for Developmental Disorders".

# 12 FINANCES

## University of Tsukuba Initial Budget for AY 2024

(unit: million yen)



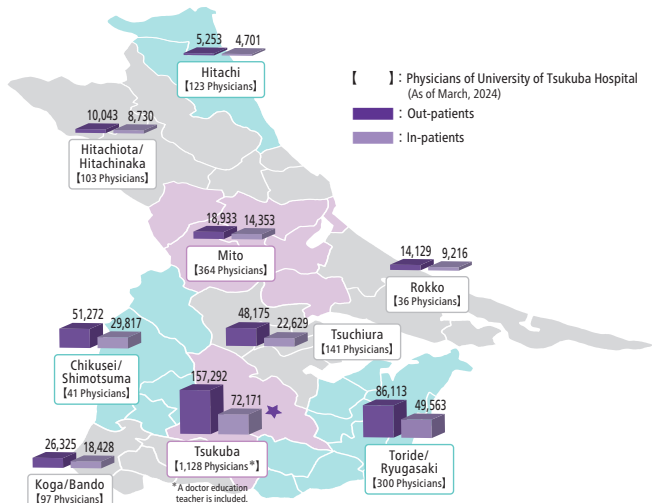
# 13 UNIVERSITY OF TSUKUBA HOSPITAL

## ■ Provision of Advanced Medical Care

As the single advanced treatment hospital in Ibaraki prefecture (88 advanced treatment hospitals nationwide), we engage in the treatment specialized in advanced medical care such as cancer treatment using proton beams, surgery using surgical support robots (da Vinci), etc. As the last bastion of the regional medical care, we accept the patients who need the advanced medical care from all over the prefecture, and contribute to the regional medical care.

## ■ Enhancement of Community Medical Care through Training of Physicians

As the single educational institution of medicine (81 institutions nationwide), we train physicians who will be responsible for regional medical care and prevent the regional medical collapse due to lack of physicians or uneven distribution. About half of the graduates of University of Tsukuba are now working in the prefecture, and one-third of the number of physicians in the prefecture are physicians of University of Tsukuba Hospital.



## ■ Achievement of Critical-Care Patients Acceptance

As the single Advanced Emergency and Critical Care Center in our prefecture (47 centers nationwide), we accept severe patients 24-hour / 365-day, difficult to cope with the other non-advanced centers in the prefecture and provide advanced medical care to the patients. Also we engage with fostering emergency physicians to strengthen the system of emergency medicine.

	No. of Critical-Care Patients	No. of Ambulance Transport	No. of Ambulance Helicopter Transport
FY2021	7,489	3,134	49
FY2022	8,172	3,759	37
FY2023	7,790	3,780	32

# 14 LABORATORY SCHOOLS

As of May 1, 2024

School Founding Year (Location)	Features	No. of Students (No. of Teachers)
Elementary School 1873 (Tokyo)	- Departmentalized instruction (class size of 32 students) - Dissemination of research result at class observation and research workshop (twice a year; total attendance approx. 5,000 people)	751 (36)
Junior High School at Otsuka 1888 (Tokyo)	- Guidance in school courses emphasizing "language activities" and "experiential learning" - School events created from scratch by students (Tomiura seaside school, school play)	612 (30)
Senior High School at Otsuka 1888 (Tokyo)	- Subject pedagogy that thoroughly masters the basics and a well-balanced curriculum - Student-centered school events and events held by individual grade levels (cultural festival, sporting event)	715 (47)
Junior High School & Senior High School at Komaba 1947 (Tokyo)	- The only boys' school in Japan with an integrated junior and senior high school attached to a national university, Super Science High School (SSH) (since 2002) - Cultivate creativity and leadership through school events (music festival, sports festival, cultural festival, paddy rice cultivation)	853 (45)
Senior High School at Sakado 1946 (Saitama)	- Pioneer in integrated course (since 1994), International Baccalaureate accredited school (since 2016) - Curriculum centered on inquiry-based learning	477 (48)
Special Needs Education School for the Visually Impaired 1876 (Tokyo)	- The only special needs education school for the visually impaired in Japan attached to a national university - Learning through observation using touch sensation, school events created by students (summer school, cultural festival)	155 (107)
Special Needs Education School for the Deaf 1875 (Chiba)	- The only special needs education school for the deaf in Japan attached to a national university - Practice and research related to the acquisition of solid Japanese language skills, coursework, and lifelong education	185 (93)
Special Needs Education School for the Mentally Challenged 1908 (Tokyo)	- Curriculum development of a model for special needs education school for the mentally challenged - Initiatives such as utilization of a vocational skill training facility (Egao Café) and remote support for Japanese schools	67 (33)
Special Needs Education School for the Physically Challenged 1958 (Tokyo)	- The only special needs education school for the physically challenged in Japan attached to a national university - Guidance of each subject and self-reliance activities based on an individual instruction plan, and education practice using ICT and original teaching materials	111 (69)
Special Needs Education School for Children with Autism 1973 (Kanagawa)	- Leading education and research on autistic children with intellectual disability - Holding of the Autism Education Practice and Research Council	50 (39)
6 Regular Laboratory Schools 5 Special Needs Schools	- As a laboratory school attached to a national university, all 11 schools hold study groups and workshops to disseminate research results	Total 3,976 (Teachers Total 547)

Organizations Founding Year (Location)	Features	No. of Students (No. of Faculty)
Education Bureau of the Laboratory Schools 1978 (Tokyo)	- Conduct practical research on school education and manage 11 laboratory schools - Promotion of the World Wide Learning (WWL) project and inclusive education, The Kagakunome ('Science Buds') Awards - Operation of the Center for Psychological Developmental Counseling and Consultation and establishment of the Group for Cooperative Promotion of Special Needs Education	- (10)
Acupuncture and Physical Therapy Teacher Training School 1903 (Tokyo)	- The only facility that trains teachers to teach physical therapy at special needs education school for the visually impaired in Japan. - Many teachers and students with visual impairment - Operation of acupuncture and moxibustion treatment rooms (3,235 users in AY 2023)	21 (4)



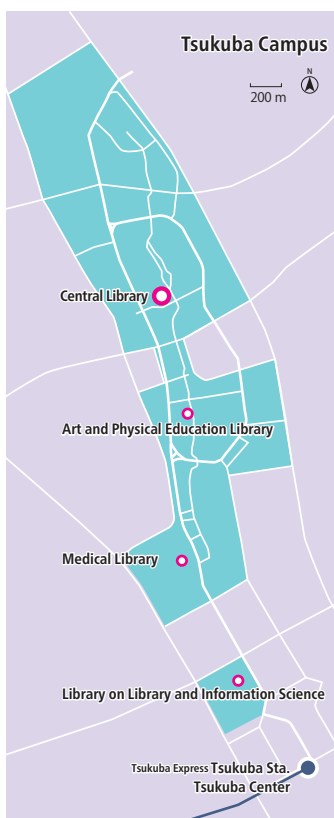
# 15 UNIVERSITY LIBRARIES

## Library Use in AY 2023

People Entering Libraries	653,827
	1,890 per day
People Borrowing Books	82,573
	239 per day
Books Borrowed	212,543
	614 per day

## Collection (As of March 31, 2024)

Books	Japanese	1,703,166
	Foreign	1,048,290
	E-books	42,583
Journals and Magazines	Japanese	17,925
	Foreign	13,009
	E-journals	37,409



## Library Hours

Tsukuba Campus		During the Semester	Vacation Periods
● Central Library	Mon. – Fri.	8:30 - 22:00	9:00 - 20:00
	Sat./Sun./Hol.	9:00 - 20:00	9:00 - 18:00
● Art and Physical Education Library ● Library on Library and Information Science	Mon. – Fri.	8:30 - 22:00	9:00 - 17:00
	Sat./Sun./Hol.	10:00 - 18:00	Closed
● Medical Library	Mon. – Fri.	8:30 - 22:00	9:00 - 20:00*
	Sat./Sun./Hol.	9:00 - 22:00	

\*Library hours in February and September are the same as during the semester.

Tokyo Campus	Mon.	Tue.–Fri.	Sat.	Sun.	Hol.
● Otsuka Library	10:30 - 18:30	10:00 - 21:10	10:00 - 19:50	10:00 - 18:00	Closed

Any temporary closures or changing to opening hours will be announced on the library website.

# IMAGINE THE FUTURE.

**Maps and Data**  
**University of Tsukuba**  
At a Glance

Edited & Published by  
Bureau of Public Relations, University of Tsukuba  
1-1-1 Tennodai, Tsukuba, Ibaraki 305-8577, Japan

Published in October 2024



[www.tsukuba.ac.jp/en/](http://www.tsukuba.ac.jp/en/)

The Tsukuba Campus covers approximately 258 hectares, stretching around five kilometers north-to-south and about one kilometer east-to-west. The Education Bureau of the Laboratory Schools and graduate school facilities for working individuals are located in the Bunkyo School Building at the Tokyo Campus.

## Access

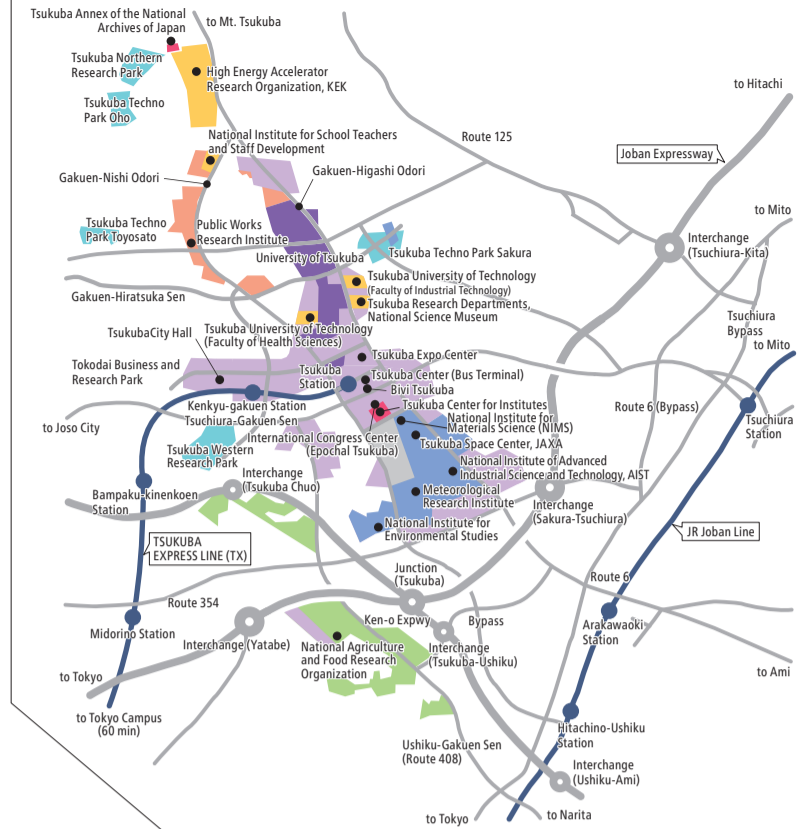


## Tsukuba Campus

Area Name	Name of Facility
East Area	1 Stable
Agricultural and Forestry Research Center Area (Farm)	2 Tsukuba-Plant Innovation Research Center (T-PIRC Farm)
Ichinoya Residence Area	3 Ichinoya Residence Hall
Research Center Area	4 Ichinoya Community Center
	5 Center for Research in Radiation, Isotopes, and Earth System Sciences (CRIES) (Environmental Dynamics & Prediction Section)
	6 Life Science Center for Survival Dynamics, Tsukuba Advanced Research Alliance (TARA)
	7 Tsukuba Industrial Liaison and Cooperative Research Center
	8 Plant-based Material Production Research Building
	9 Plasma Research Center
	10 Algae Biomass and Energy System Research Unit
	11 Empowerment Studio
	12 Research Facility Center for Science and Technology (Engineering Workshop Division)
	13 Research Facility Center for Science and Technology (Cryogenics Division)
	14 Center for Research in Radiation, Isotopes, and Earth System Sciences (CRIES) (Tandem Accelerator Complex)
	15 Cooperative Research Building C
	16 Research Facility Center for Science and Technology (Chemical Analysis Division)
	17 Project and Research Building
	18 Center for Research in Radiation, Isotopes, and Earth System Sciences (CRIES) (Radioisotope Research Section)
	19 University of Tsukuba Archives / Energy Plant
Area 3	20 Third Gymnasium
	21 3A-3D-G, 3K, 3L Buildings / Academic Service Office for the Systems and Information Engineering Area
	22 Institutes of Engineering Sciences
	23 Natural Sciences Building
	24 Cooperative Research Building D
	25 Laboratory of Advanced Research B
	26 Cybernetics Research Building
Area 2	27 Tsukuba-Plant Innovation Research Center (T-PIRC) (Gene Research Center)
	28 Institutes of Biological and Agricultural Sciences
	29 First Gymnasium
	30 Laboratory of Advanced Research A
	31 2A-2E, 2G, 2H Buildings / Academic Service Office for the Life and Environmental Sciences Area, Academic Service Office for the Human Sciences Area
	32 Master's Programs in Humanities and Social Sciences
	33 Institutes of Human Sciences
	34 Laboratory for Environmental Disaster Prevention Research / Mountain Science Center
Area 1	35 Central Library
	36 Institutes of Humanities and Social Sciences
	37 Joint Use Facility Building A
	38 Cooperative Research Building A
	39 Joint Use Facility Building D
	40 1D-1G Buildings / Student Plaza
	41 1A-1C, 1H Buildings / Academic Service Office for the Humanities and Social Sciences Area, Academic Service Office for the Pure and Applied Sciences Area, Student Commons, Academic Support Center for the School of Comprehensive Studies
	42 Students' Club House (Cultural)
	43 Institutes of Natural Sciences
	44 Center for Computational Sciences (CCS)
Administration Center Area	45 Administration Center, Annex Building
University Hall Area	46 Auditorium
	47 University Hall / University of Tsukuba Gallery / University of Tsukuba Art Space
	48 University of Tsukuba 30th Anniversary Hall
	49 University Hall B
	50 Academic Computing and Communications Center
	51 Center for Education of Global Communication (CEGLOC)
	52 University Health Center
	53 International Lecture Building
Art and Physical Education Area	54 Institute of Art and Design
	55 5C Building/Academic Service Office for the Art and Sport Sciences Area
	56 Cooperative Research Building B
	57 Institute of Health and Sport Sciences
	58 Sport Performance and Clinic Laboratory
	59 6A, 6B Buildings
	60 Workshop (Art and Design)
	61 Practice Rooms for Art & Design
	62 Art and Physical Education Library
	63 Central Gymnasium
	64 T-Dome
	65 Sport Fluid Engineering Laboratory
	66 Cafeteria for Art and Physical Education
	67 Global Sport Innovation Building
	68 Sport and Physical Education Center / Sport and Physical Student's Club House
	69 Indoor Swimming Pool
	70 Gymnasium (Martial Arts)
	71 Gymnasium (Volleyball)
	72 Kambara Hall
	73 Laboratory of Advanced Research D
Athletic Fields Area	74 Japanese Archery Training Hall
	75 Tsukuba Training Lodge
	76 Club House
	77 Building for Extra-curricular Activities

## Other Facilities

Saitama	Toda Boat House and dormitory
Chiba	Tateyama Training Center
Yamanashi	Yamanaka Training Center
Nagano	Yatsugatake Forest
	Sugadaira Research Station
Shizuoka	Ikawa Forest
	Shimoda Marine Research Center



- Education
- Construction
- Science and Engineering
- Biology and Agriculture
- Common Facilities
- Research Park
- Science City Area

Area Name	Name of Facility
Medical Area	78 Energy Plant
	79 IIIS
	80 4B, 4C, 4D Buildings
	81 Laboratory Animal Resource Center
	82 4E Building
	83 Joint Use Facility Building B
	84 Medical Radioisotope Research Institutes
	85 Institute of Medicine
	86 University of Tsukuba Hospital
	87 4A Building / Academic Service Office for the Medical Sciences Area
	88 Medical Sciences Building
	89 Medical Library / Clinical Lecture Rooms
	90 Cafeteria for Medical Sciences
	91 Second Gymnasium
	92 Proton Medical Research Center
	93 Health and Medical Science Innovation Laboratory
	94 Tsukuba Medical Laboratory of Education and Research
	95 Advanced Imaging Center
	96 Disaster Prevention and Infection Control Building
Hirasuna Residence Area	97 Hirasuna Community Center
	98 Hirasuna Residence Hall
	99 Global Village
	100 Medical Residences
Oikoshi Residence Area	101 Oikoshi Community Center / Yurinoki Day-care Center
	102 Oikoshi Residence Hall
	103 Foreign Scholars' Residence
Kasuga Area	104 7A Building
	105 Kasuga Residence Hall Buildings 1, 2
	106 Innovative Medical Research Institute
	107 Kasuga Auditorium
	108 7B, 7C Buildings / Academic Service Office for the Library, Information and Media Sciences Area
	109 Library on Library and Information Science
	110 7D Building
	111 Fourth Gymnasium
	112 Kasuga Japanese Archery Training Hall
	113 Union of Library and Information-media Studios
	114 Kasuga Residence Hall Building 3
	115 Kasuga Welfare Facilities
	116 Global Guest House

## Tokyo Campus

	Name of Facility
Bunkyo School Building	117 Otsuka Library
	Academic Service Office for the Business Sciences
	Education Bureau of the Laboratory Schools
	Department of Tokyo Campus Affairs
	Acupuncture and Physical Therapy Teacher Training School
	Office of Asset Management and Finance

Laboratory Schools	
Tokyo	Elementary School, Junior High School at Otsuka, Senior High School at Otsuka, Junior High School and Senior High School at Komaba, Special Needs Education School for the Visually Impaired, Special Needs Education School for the Mentally Challenged, Special Needs Education School for the Physically Challenged
Saitama	Senior High School at Sakado
Chiba	Special Needs Education School for the Deaf
Kanagawa	Special Needs Education School for Children with Autism

- Facilities
- Pedestrian Deck
- Sidewalk
- Facilities for Physical Education
- Farm
- Campus Bus Stop
- Information Center
- Parking Area
- Heliport
- Hospital Heliport
- Convenience Store

